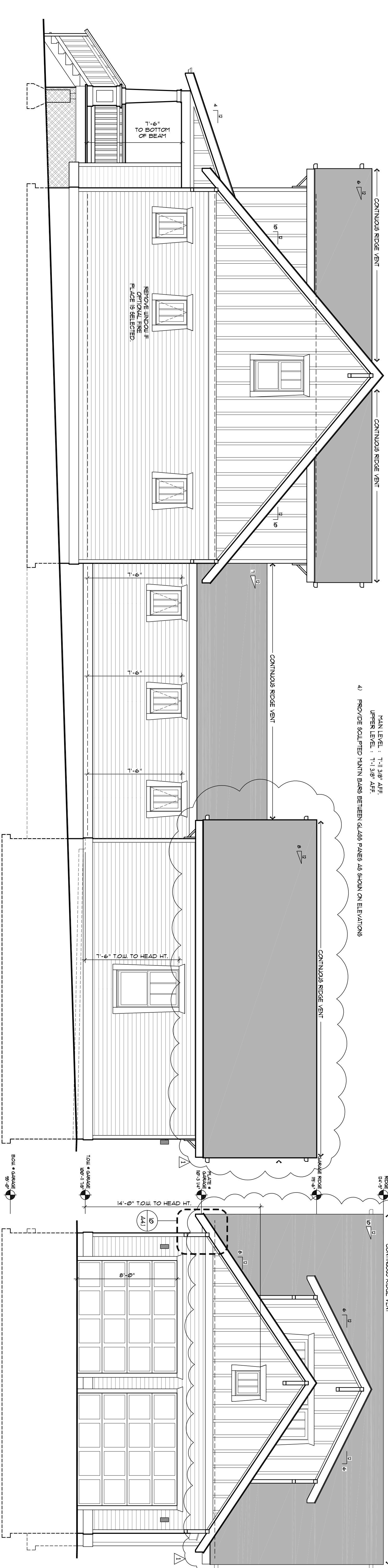


LEFT ELEVATION at STREET

SCALE: 1/4" = 1'-0" (1X17 1/8" = 1'-0")

FRONT ELEVATION

SCALE: 1/4" = 1'-0" (1X17 1/8" = 1'-0")



RIGHT ELEVATION

SCALE: 1/4" = 1'-0" (1X17 1/8" = 1'-0")

REAR ELEVATION

SCALE: 1/4" = 1'-0" (1X17 1/8" = 1'-0")

- WINDOW NOTES:**
- 1) WOOD WINDOWS REPRESENT THE 2008 SERIES VINTL WINDOWS FROM WILKINS WINDOW WORKS. ALL WINDOW HEADS AND SILLINGS SHALL BE APPROVED BY THE BUILDER/ARCHITECT PRIOR TO ACCEPTANCE OF BID.
 - 2) ALL OPERABLE WINDOWS TO BE FINISHED WITH REMOVABLE BUG SCREENS.
 - 3) THE FOLLOWING WINDOW HEADS AND SILLINGS SHALL NOT BE ALLOWED (EXCEPT FOR WINDOWS WITH LESS THAN 12" OF HEAD OR SILL ON THE ELEVATION)
 MAIN LEVEL: 1'-11 3/8" AFF.
 UPPER LEVEL: 1'-11 3/8" AFF.
 - 4) PROVIDE SCULPTED MUNTIN BARS BETWEEN GLASS PANE AS SHOWN ON ELEVATIONS

© 2006 WOLFF LYON ARCHITECTS EXPRESSLY RESERVES ITS COMMON LAW COPYRIGHT AND OTHER PROPERTY RIGHTS IN THESE PLANS. THESE PLANS ARE NOT TO BE REPRODUCED, CHANGED, OR COPIED IN ANY FORM OR MANNER WHATSOEVER, NOR ARE THEY TO BE ASSIGNED TO ANY THIRD PARTY WITHOUT FIRST OBTAINING THE EXPRESSED WRITTEN PERMISSION AND CONSENT OF WOLFF LYON ARCHITECTS

WOLFF • LYON
ARCHITECTS

• WELLINGTON •
NEIGHBORHOOD
BRECKENRIDGE, COLORADO

CLIENT:
POPLARHOUSE LLC
200
BOULDER, CO 80502

ARCHITECT:
WOLFF LYON ARCHITECTS
700 PINE AVENUE, SUITE 210
BOULDER, CO 80502
T: (303) 447-2788
F: (303) 447-2888

STRUCTURAL ENGINEER:
MOUNTAIN DESIGN GROUP LLC
25713 PROUDLINE SCenic DR., STR. B-1
T: (303) 570-8811
F: (303) 570-8472

PINON
◆ WELLINGTON ◆
NEIGHBORHOOD
BRECKENRIDGE, COLORADO

ISSUE DATES:

DATE	DESCRIPTION
01.04.06	S40 REVIEW
02.13.06	S40 REVIEW
03.10.06	WOLFF LYON REDLINES
04.13.06	WOLFF LYON REDLINES
01.10.07	CONSTRUCTION SET

REVISIONS:

DATE	DESCRIPTION
05.16.07	REVISIONS

DRAWN BY:
PROJECT NO.:
ELEVATIONS

A2.1

9809