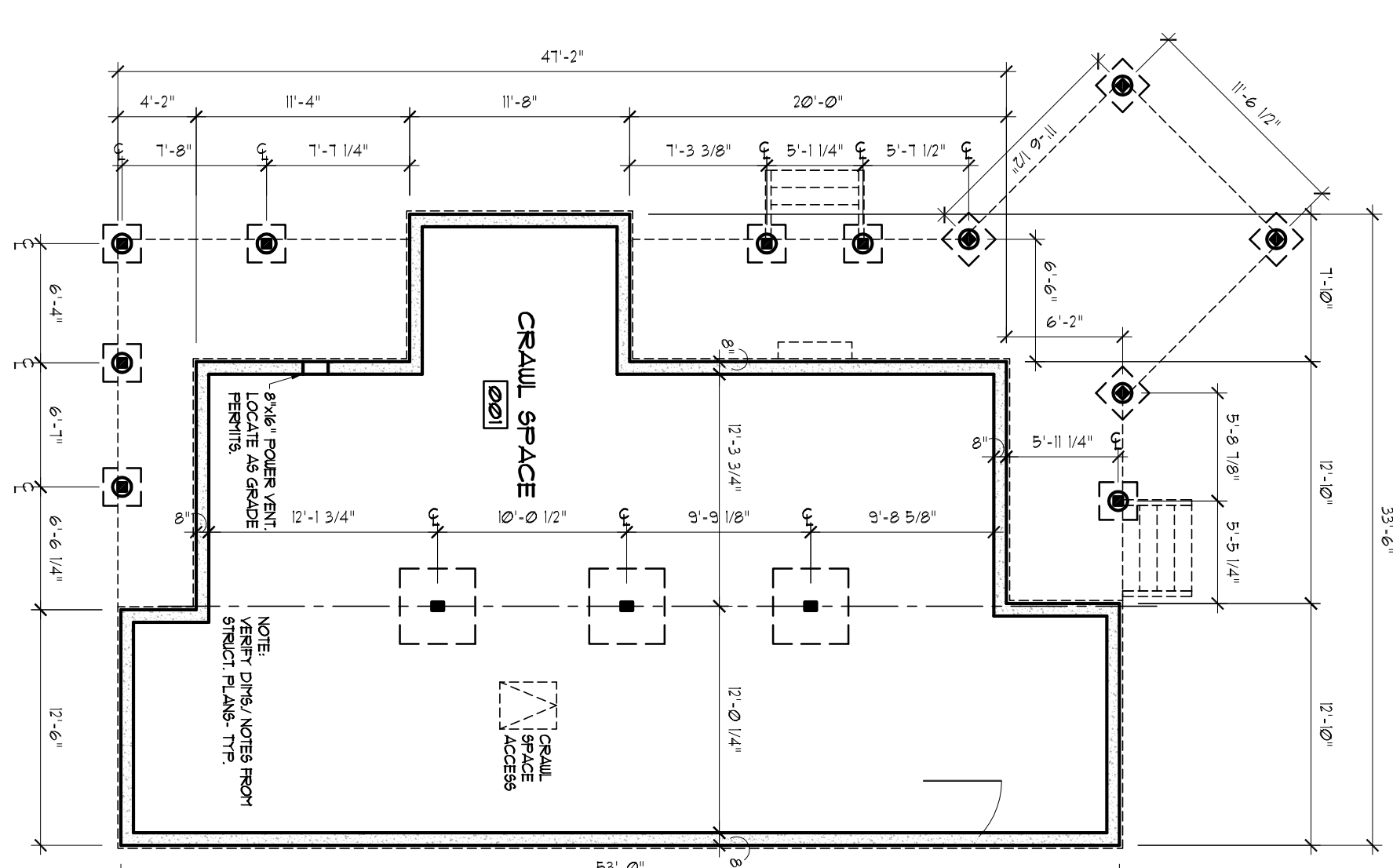
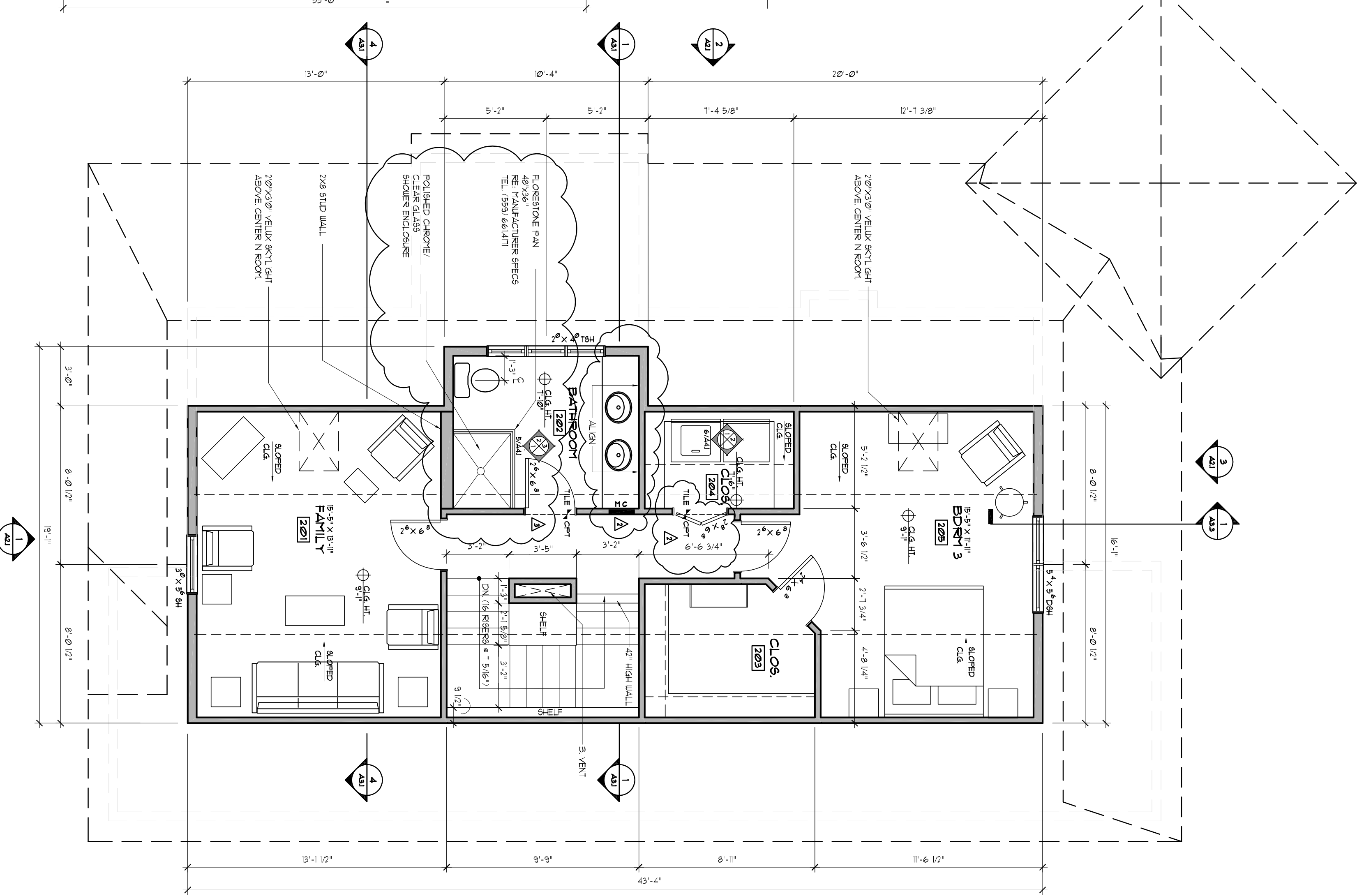


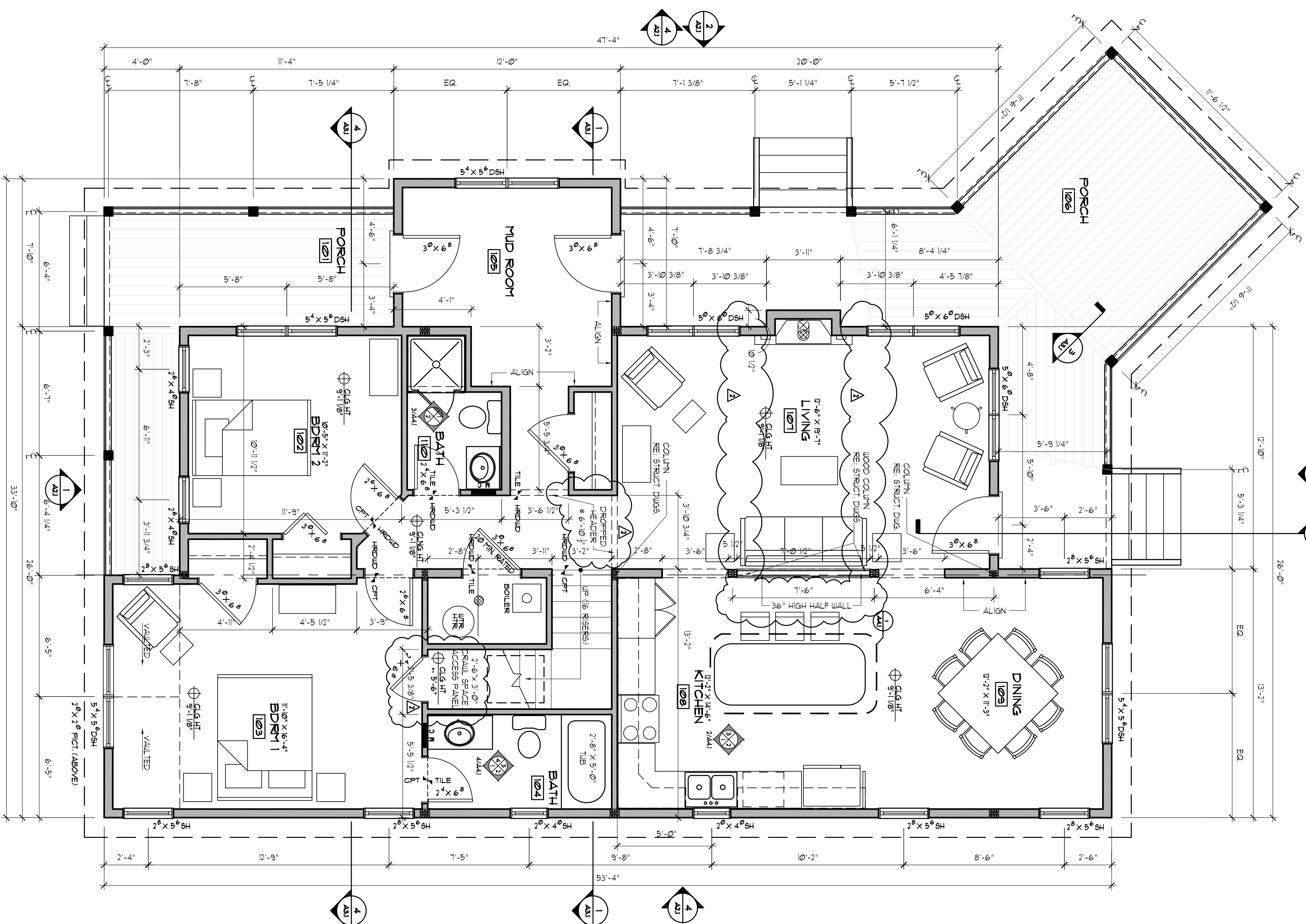
4 ROOF PLAN
SCALE 1/8" = 1'-0" (MAX SHIT 1/8" = 1'-0")



3 FOUNDATION PLAN
SCALE 1/8" = 1'-0" (MAX SHIT 1/8" = 1'-0")



2 SECOND LEVEL
SCALE 1/4" = 1'-0" (MAX SHIT 1/8" = 1'-0")
656 SQUARE FEET
207 SQUARE FEET (TOTAL FINISHED)



1 FIRST LEVEL
SCALE 1/4" = 1'-0" (MAX SHIT 1/8" = 1'-0")
194 SQUARE FEET
207 SQUARE FEET (TOTAL FINISHED)

WOLFF • LYON
ARCHITECTS
WELLINGTON •
NEIGHBORHOOD
BRECKENRIDGE, COLORADO

CLIENT:
POW ARBORER LLC
777 PALMER ST SUITE 300
BOULDER, CO 80502

ARCHITECT:
WOLFF-LYON ARCHITECTS
777 PALMER STREET - SUITE 210
BOULDER, CO 80502
P: (303) 447-5889
F: (303) 447-5889

STRUCTURAL ENGINEER:
J.C. BROWN ENGINEERING
3075 HENRIETTA STREET, DEPT. 574, B-1
BENEFICIAL, CO 80519
P: (303) 670-8811
F: (303) 670-9472

WINTER ROSE

WELLINGTON • NEIGHBORHOOD

BRECKENRIDGE, COLORADO

ISSUE DATES:	
DATE	DESCRIPTION
09.25.06	Construction Set

REVISIONS:	
DATE	DESCRIPTION
01.30.07	Revisions
03.01.07	Revisions

PROJECT NO.: 0607
DRAWN BY: JLD/DB
FLOOR PLANS
A1.1

© 2006 WOLFF LYON ARCHITECTS EXPRESSLY RESERVES ITS COMMON LAW COPYRIGHT AND OTHER PROPERTY RIGHTS IN THESE PLANS. THESE PLANS ARE NOT TO BE REPRODUCED, CHANGED, OR COPIED IN ANY FORM OR MANNER WHATSOEVER, NOR ARE THEY TO BE ASSIGNED TO ANY THIRD PARTY WITHOUT FIRST OBTAINING THE EXPRESSED WRITTEN PERMISSION AND CONSENT OF WOLFF LYON ARCHITECTS