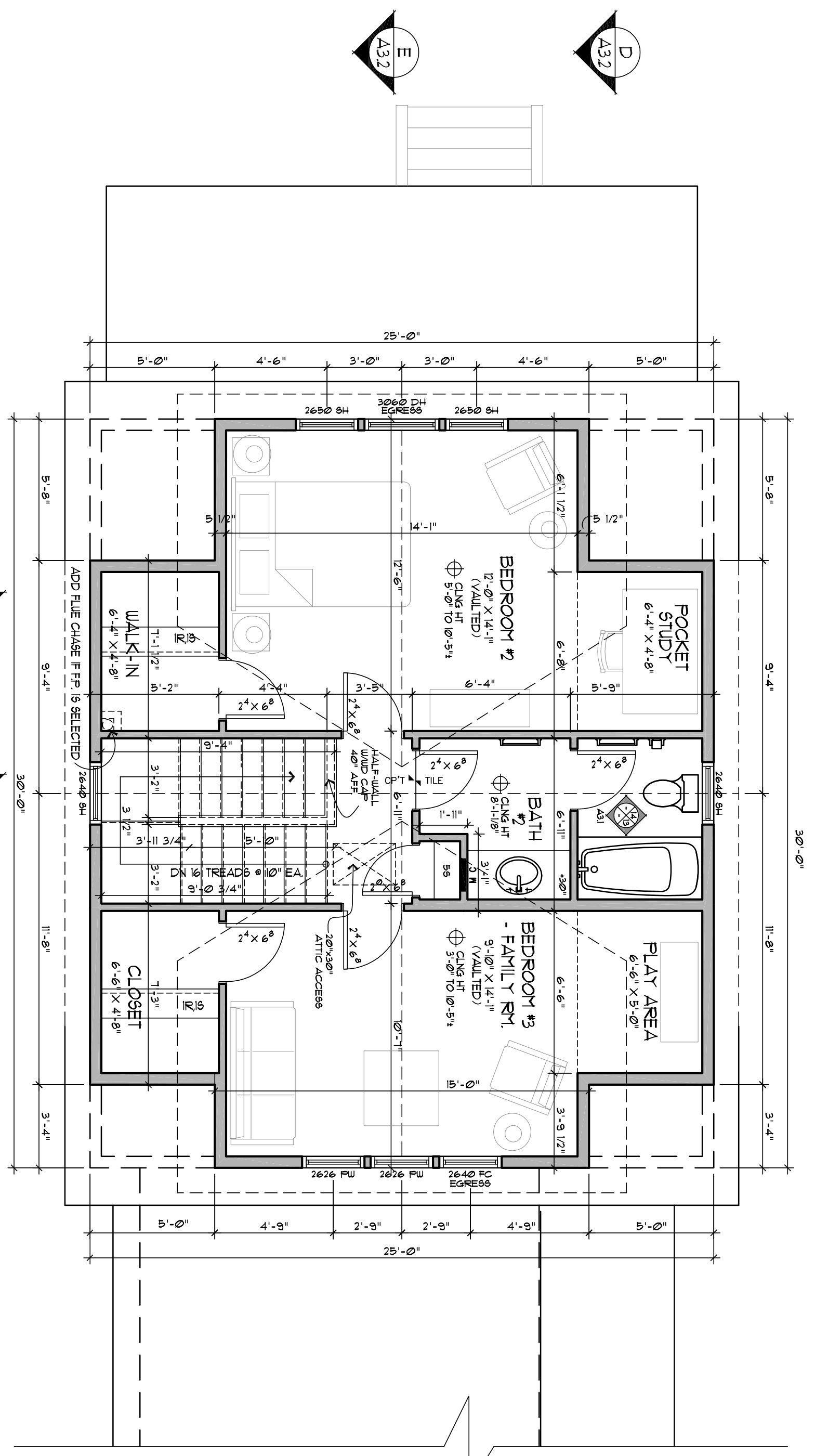


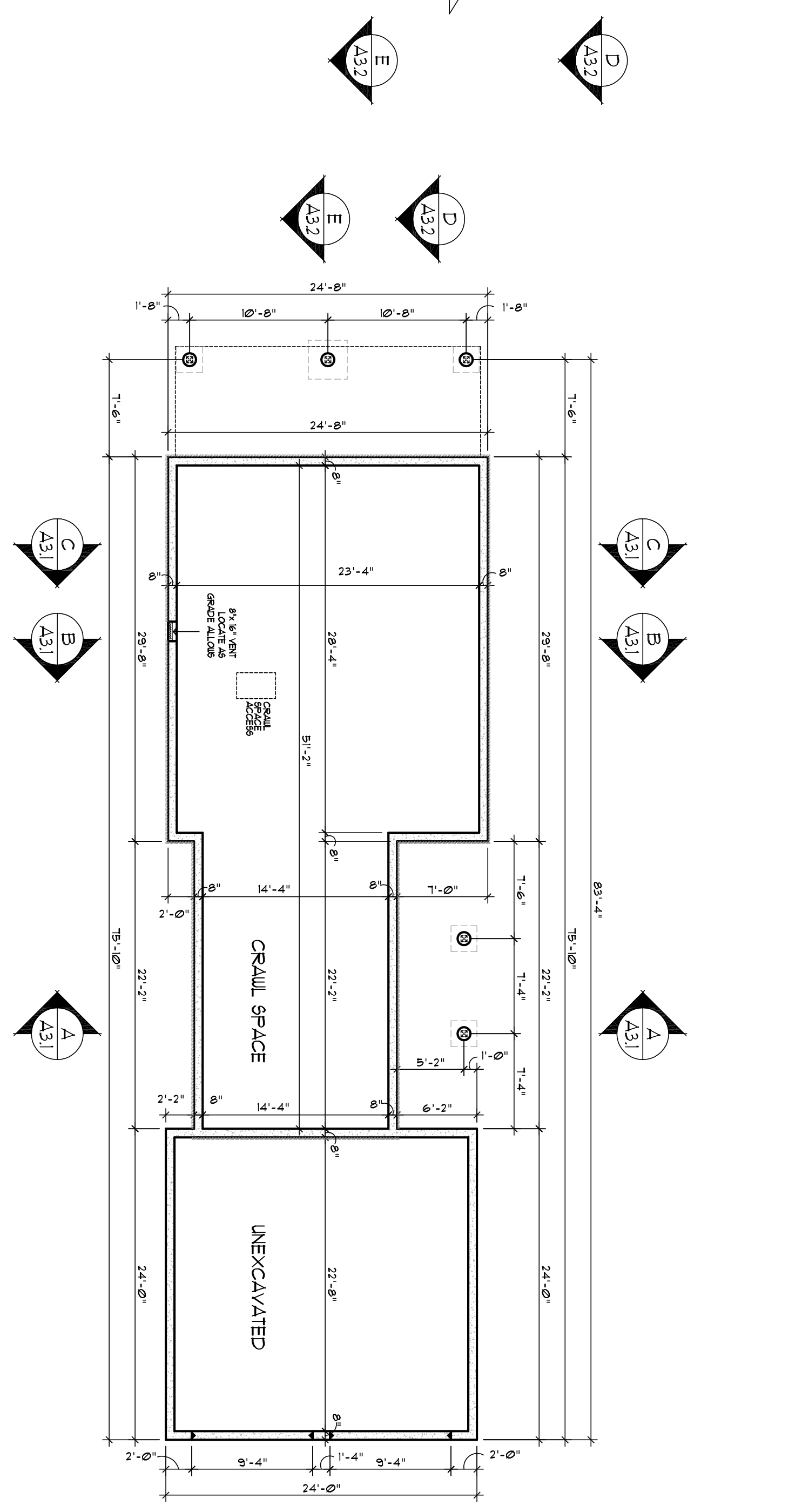
**MAIN LEVEL FLOOR PLAN**  
SCALE: 1/4" = 1'-0" (11X17 1/8" = 1'-0")

131 SQUARE FEET  
(TOTAL FINISHED)



**UPPER LEVEL FLOOR PLAN**  
SCALE: 1/4" = 1'-0" (11X17 1/8" = 1'-0")

600 SQUARE FEET  
(TOTAL FINISHED)

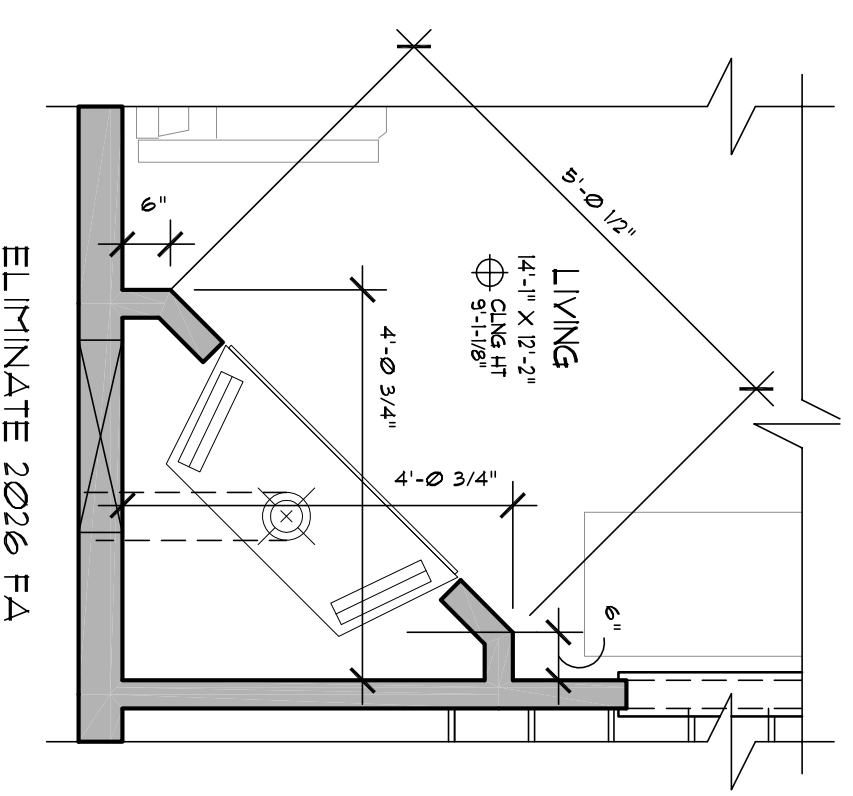
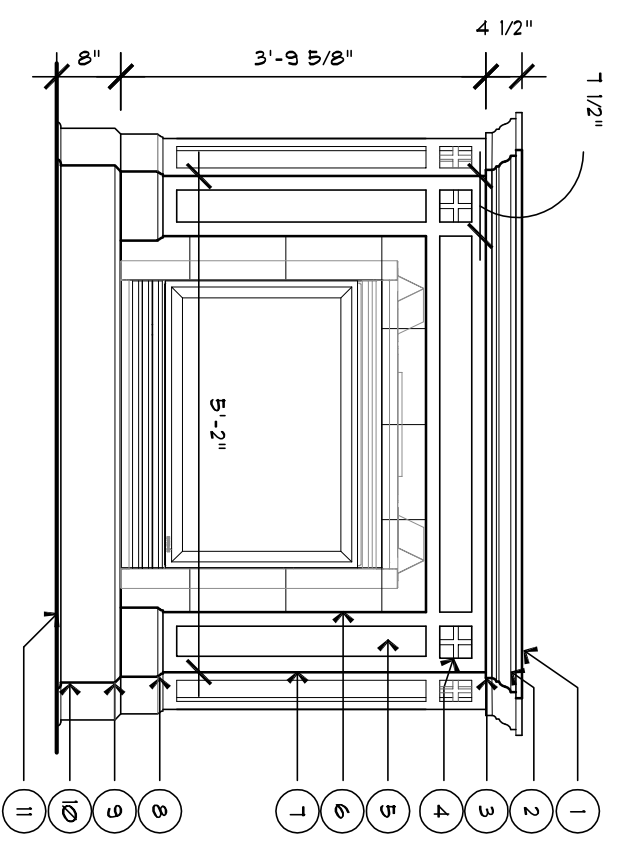


**FOUNDATION PLAN**  
SCALE: 1/4" = 1'-0" (11X17 1/8" = 1'-0")

131 SQUARE FEET  
(TOTAL FINISHED)

**OPTIONAL FIRE PLACE**  
SCALE: 1/2" = 1'-0" (11X17 1/4" = 1'-0")

- MATERIALS LIST**
1. 1 1/2" OAK WITH ROUTED EDGE
  2. 1/2" x 1/2" x 1/2" OAK
  3. 1/2" x 1/2" x 1/2" OAK
  4. 1/2" x 1/2" x 1/2" OAK
  5. 1/2" x 1/2" x 1/2" OAK
  6. 1/2" x 1/2" x 1/2" OAK
  7. 1/2" x 1/2" x 1/2" OAK
  8. 1/2" x 1/2" x 1/2" OAK
  9. 1/2" x 1/2" x 1/2" OAK
  10. 1/2" x 1/2" x 1/2" OAK
  11. 1/2" x 1/2" x 1/2" OAK
  12. 1/2" x 1/2" x 1/2" OAK



**WOLFF • LYON ARCHITECTS**

**WELLINGTON • NEIGHBORHOOD BRECKENRIDGE, COLORADO**

**PINON**

**◆ WELLINGTON ◆ NEIGHBORHOOD ◆ BRECKENRIDGE, COLORADO**

**CLIENT:**  
POPFARHOUSE LLC  
700 PINE BLVD  
BOULDER, CO 80502

**ARCHITECT:**  
WOLFF • LYON ARCHITECTS  
700 PINE BLVD, SUITE 210  
BOULDER, CO 80502  
P: (303) 447-2788  
F: (303) 447-2888

**STRUCTURAL ENGINEER:**  
MOUNTAIN DESIGN GROUP LLC  
25713 RIVINGTON BLVD, STE. B-1  
DENVER, CO 80231  
P: (303) 570-8811  
F: (303) 570-8472

**ISSUE DATES:**

DATE	DESCRIPTION
01.04.06	S40 REVIEW
02.13.06	S40 REVIEW
03.10.06	WOLFF LYON REDLINES
04.13.06	WOLFF LYON REDLINES
01.10.07	CONSTRUCTION SET

**REVISIONS:**

DATE	DESCRIPTION
05.16.07	REVISIONS

**DRAWN BY:** FLOOR PLANS  
**PROJECT NO.:** 9909  
**A1.1**

© 2006 WOLFF LYON ARCHITECTS EXPRESSLY RESERVES ITS COMMON LAW COPYRIGHT AND OTHER PROPERTY RIGHTS IN THESE PLANS. THESE PLANS ARE NOT TO BE REPRODUCED, CHANGED, OR COPIED IN ANY FORM OR MANNER WHATSOEVER, NOR ARE THEY TO BE ASSIGNED TO ANY THIRD PARTY WITHOUT FIRST OBTAINING THE EXPRESSED WRITTEN PERMISSION AND CONSENT OF WOLFF LYON ARCHITECTS