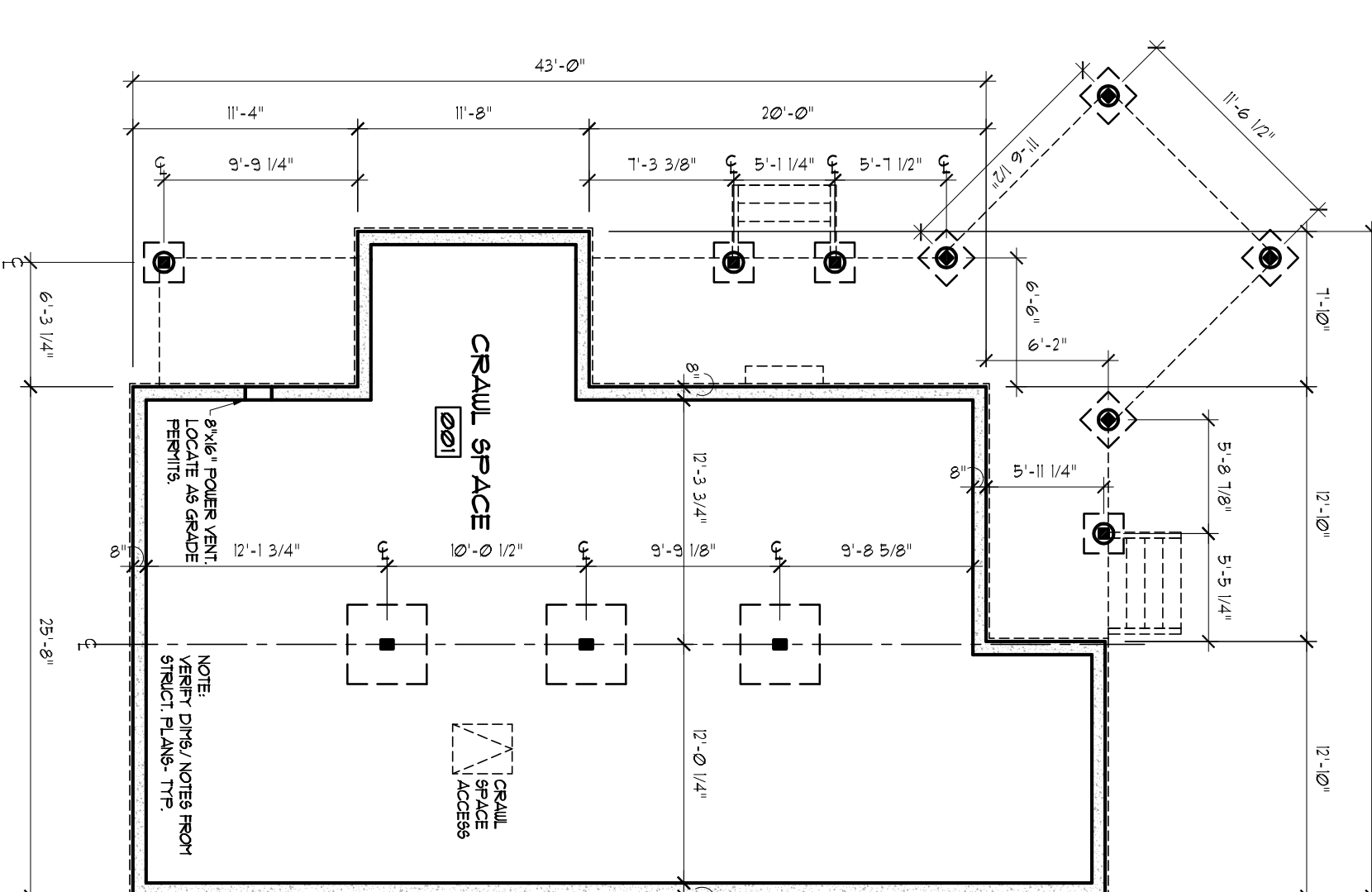
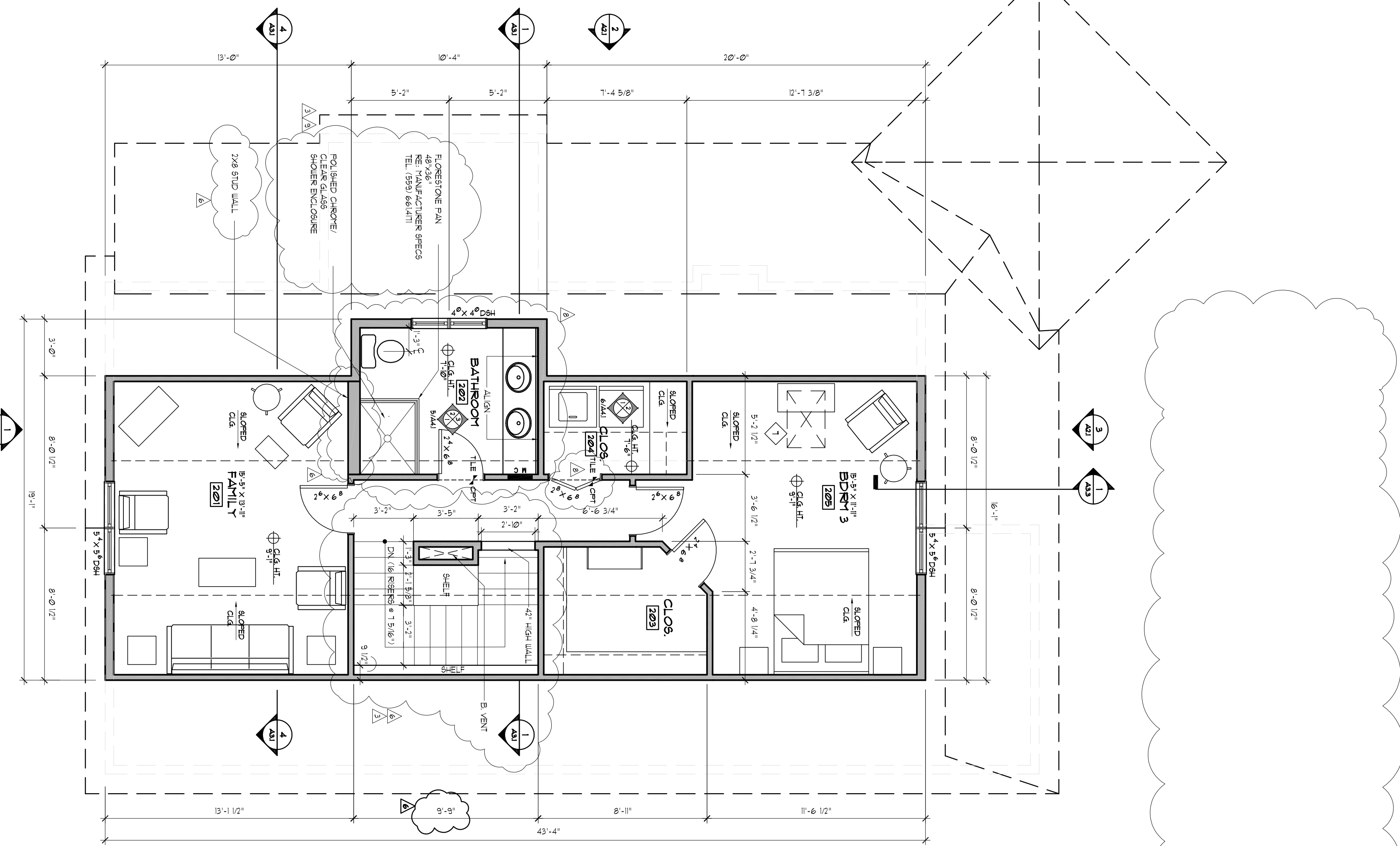


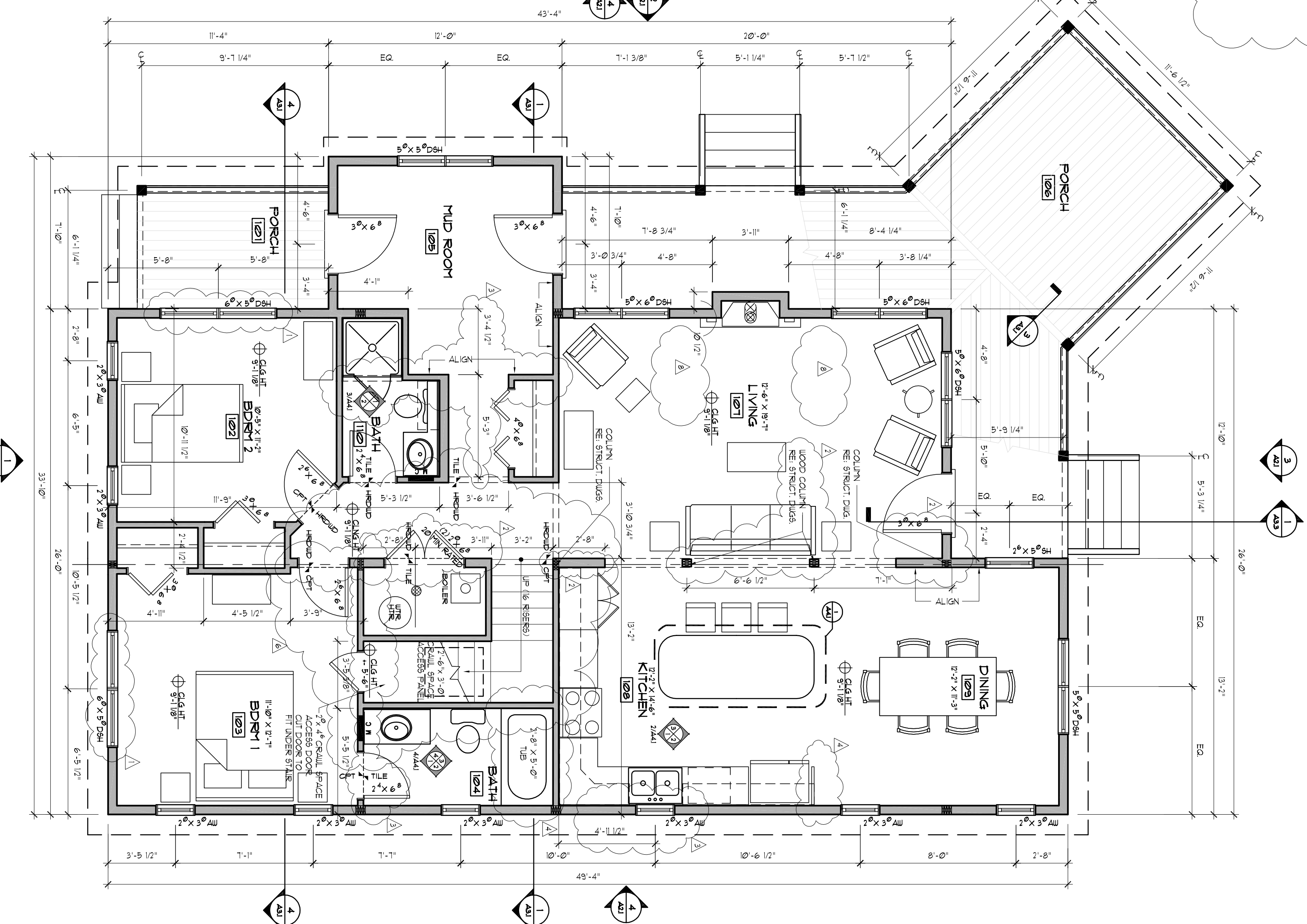
4 ROOF PLAN
SCALE 1/8" = 1'-0" (1/4" SHIT 1/8" = 1'-0")



3 FOUNDATION PLAN
SCALE 1/8" = 1'-0" (1/4" SHIT 1/8" = 1'-0")



2 SECOND LEVEL
SCALE 1/4" = 1'-0" (1/4" SHIT 1/8" = 1'-0")
658 SQUARE FEET (TOTAL FINISHED)
1968 SQUARE FEET (TOTAL FINISHED)



1 FIRST LEVEL
SCALE 1/4" = 1'-0" (1/4" SHIT 1/8" = 1'-0")
810 SQUARE FEET
1968 SQUARE FEET (TOTAL FINISHED)

WOLFF • LYON ARCHITECTS
WELLINGTON NEIGHBORHOOD
BRECKENRIDGE, COLORADO

CLIENT:
TODD ARNONE LLC
777 PALMER ST SUITE 300
BOULDER, CO 80502

ARCHITECT:
WOLFF • LYON ARCHITECTS
777 PALMER STREET - SUITE 210
BOULDER, CO 80502
P: (303) 447-5889
F: (303) 447-5889

STRUCTURAL ENGINEER:
J.C. BOYD CONSULTING GROUP INC.
2015 W. HARRISON BLVD., STE. B-1
BREMEN, CO 80019
P: (303) 670-8811
F: (303) 670-9472

PONDEROSA PLUS

WELLINGTON NEIGHBORHOOD

BRECKENRIDGE, COLORADO

DATE	DESCRIPTION
02.10.06	Class C Submittal
03.30.06	Permit Set
05.09.06	Construction Set
ISSUE DATES:	
05.15.06	Revisions
05.25.06	Revisions
06.06.06	Revisions
07.17.06	Revisions
08.18.06	Revisions
01.22.07	Revisions
03.01.07	Revisions

DRAWN BY: KD/DB
PROJECT NO.: 0607

FLOOR PLANS
A1.1

© 2006 WOLFF LYON ARCHITECTS EXPRESSLY RESERVES ITS COMMON LAW COPYRIGHT AND OTHER PROPERTY RIGHTS IN THESE PLANS. THESE PLANS ARE NOT TO BE REPRODUCED, CHANGED, OR COPIED IN ANY FORM OR MANNER WHATSOEVER, NOR ARE THEY TO BE ASSIGNED TO ANY THIRD PARTY WITHOUT FIRST OBTAINING THE EXPRESSED WRITTEN PERMISSION AND CONSENT OF WOLFF LYON ARCHITECTS