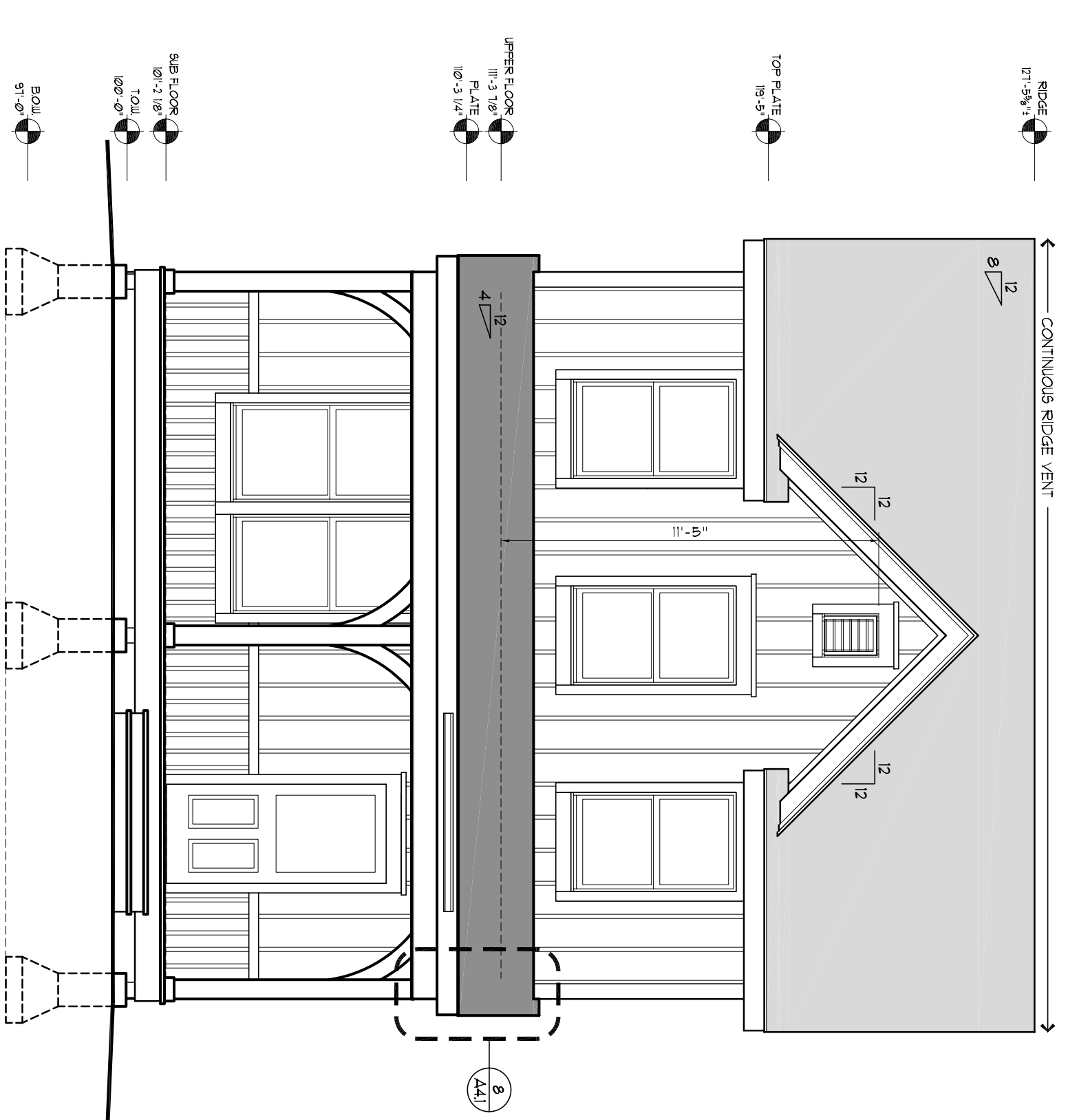




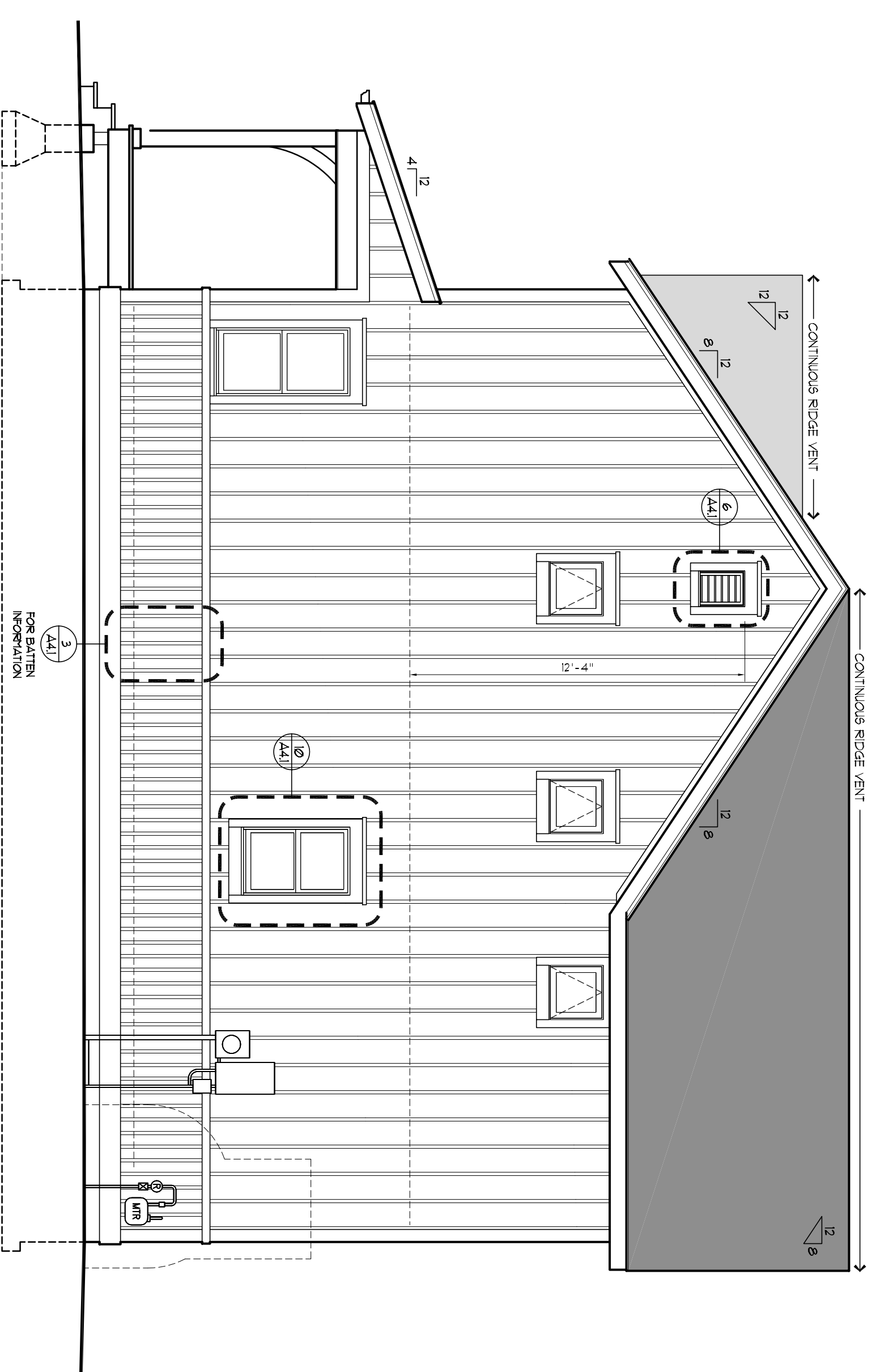
LEFT SIDE ELEVATION

SCALE: 1/4" = 1'-0" (11 X 17 SHEET : 1/8" = 1'-0")



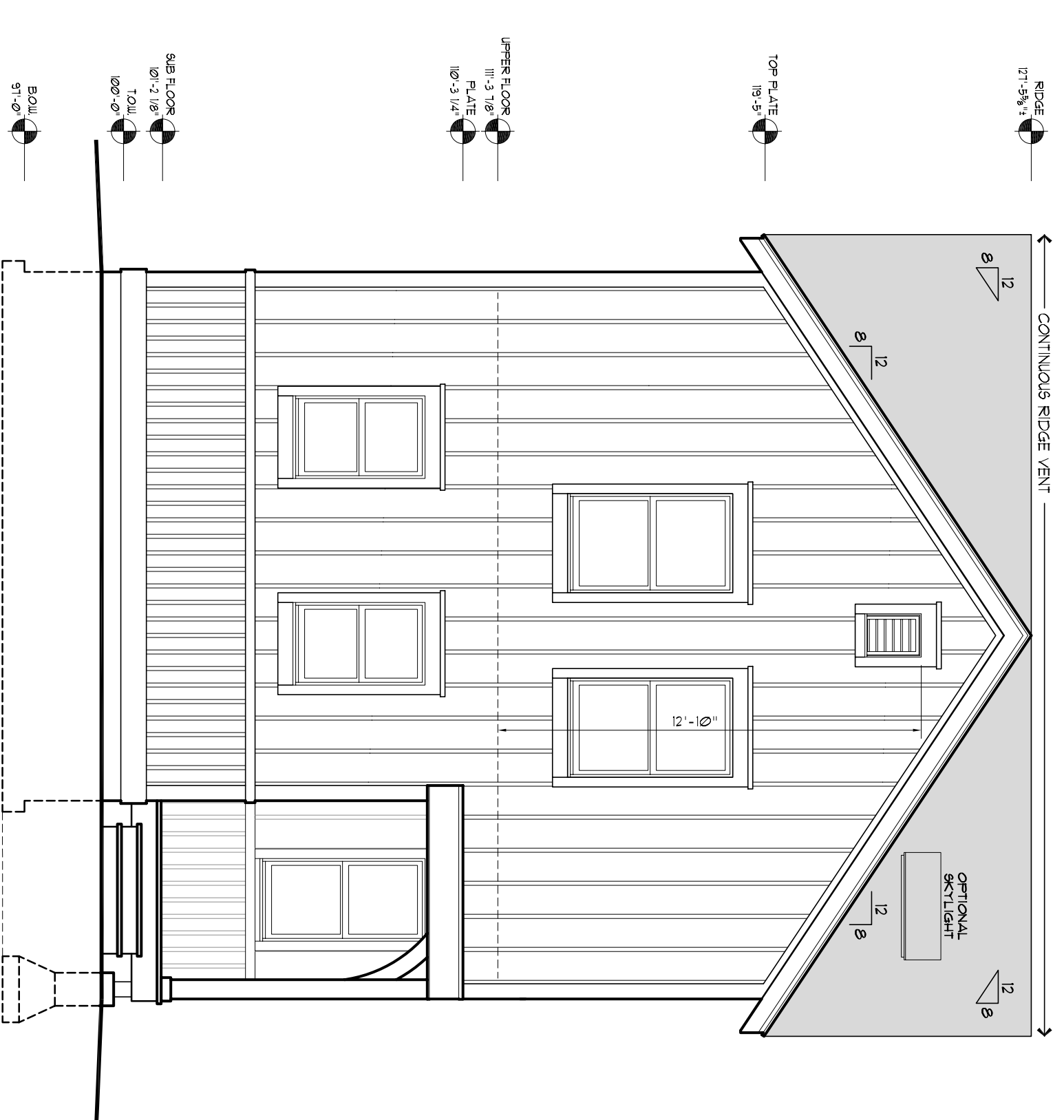
FRONT ELEVATION

SCALE: 1/4" = 1'-0" (11 X 17 SHEET : 1/8" = 1'-0")



RIGHT SIDE ELEVATION

SCALE: 1/4" = 1'-0" (11 X 17 SHEET : 1/8" = 1'-0")



REAR ELEVATION

SCALE: 1/4" = 1'-0" (11 X 17 SHEET : 1/8" = 1'-0")

- WINDOW NOTES:**
- 1) MODEL NUMBERS REPRESENT THE 5600 SERIES VINYL WINDOWS FROM HILTI (S&P) WINDOWS INC. UNLESS NOTED OTHERWISE. ANY OTHER WINDOW MODEL NUMBER SHOWN MUST BE APPROVED BY THE BUILDER/ARCHITECT PRIOR TO ACCEPTANCE OF BID.
 - 2) ALL OPERABLE WINDOWS TO BE FINISHED WITH REMOVABLE BUG SCREENS.
 - 3) THE FOLLOWING WINDOW HEAD HEIGHTS SHALL APPLY TO ALL WINDOWS (EXCEPT TRANSOMS) UNLESS NOTED OTHERWISE ON THE ELEVATIONS.
 MAIN LEVEL : 7'-5.38" AFF.
 UPPER LEVEL : 6'-11.38" AFF.
 - 4) PROVIDE SCULPTED MANTIN BARS BETWEEN GLASS PANE AS SHOWN ON ELEVATIONS.

WOLFF • LYON
ARCHITECTS

• WELLINGTON •
NEIGHBORHOOD
BRECKENRIDGE, COLORADO

CLIENT:
POPPARHOUSE LLC
10000 E. 10th Ave, Suite 200
Boulder, CO 80502

ARCHITECT:
WOLFF • LYON ARCHITECTS
700 Foothill Parkway
Boulder, CO 80502
T: (303) 447-2788
F: (303) 447-2888

STRUCTURAL ENGINEER:
MOUNTAIN DESIGN GROUP LLC
25713 PROUDLINE SCenic DR., STE. B-1
Ft. Collins, CO 80526
T: (903) 570-8811
F: (903) 570-8472

JUNIPER

◆ WELLINGTON ◆
NEIGHBORHOOD
BRECKENRIDGE, COLORADO

ISSUE DATES:

DATE	DESCRIPTION
01.04.06	S40 REVIEW
02.13.06	S40 REVIEW
03.10.06	WOLFF LYON REDLINES
04.13.06	WOLFF LYON REDLINES
05.23.06	CONSTRUCTION SET

REVISIONS:

DATE	DESCRIPTION
06.21.06	ENTIRE PAGE REVISIONS

DRAWN BY:
PROJECT No.: 9809

ELEVATIONS

A2.1